

Newfoundland and Labrador

Area Structure Presentation October 2009



Girl Guides
of Canada
Guides
du Canada

Girl Greatness Starts Here

Points to keep in mind:

- **Restructuring and/or drawing new boundary lines is challenging**
- **Consider distances between communities in the same area**
- **Don't lose the personal side of Guiding**
- **We need to be able think differently about:**
 - **Composition of Provincial Council**
 - **How many councils do we need for our present membership?**
 - **Role of the Area Commissioner (example)**
 - **Volunteers or part-time paid staff communicating directly with units, districts, etc. (example)**
- **As restructuring occurs – provide information to members**

Vision

Girl Guides of Canada-Guides du Canada, the organization of choice for girls and women, makes a positive difference in the life of every girl and woman who experiences Guiding so she can contribute responsibly to her communities.

Mission

Girl Guides of Canada-Guides du Canada enables girls to be confident, resourceful and courageous, and to make a difference in the world.



Girl Guides
of Canada
Guides
du Canada

Girl Greatness Starts Here

Girl Guides of Canada is perceived as....

Girl focused

Activity based

For girls & women

Sharing together

Adventure/service

Friendship and Leadership

Stagnant

Non-inclusive

Adult driven

Framework for girls to become better citizens

Girl Guides of Canada must be....

Girl focused

Activity based

For girls & women

Inclusive

Sharing together

Adventure/service

Friendship and Leadership

Dynamic/vibrant/exciting

Globally aware and active

Girl driven

**Framework for girls to become better citizens of the world/support
achieving Mission**

Why are we here?

- Today is different than yesterday!
- There is value in belonging to our Organization.
- Membership numbers across the country show a dramatic decrease over the past fifteen years, and even over the past five. However the rate of decline has lessened.
- We must work together to continue to be the Organization of choice for girls and women.
- Administrative and council structures have changed little since the middle of the last century.



15+ Years

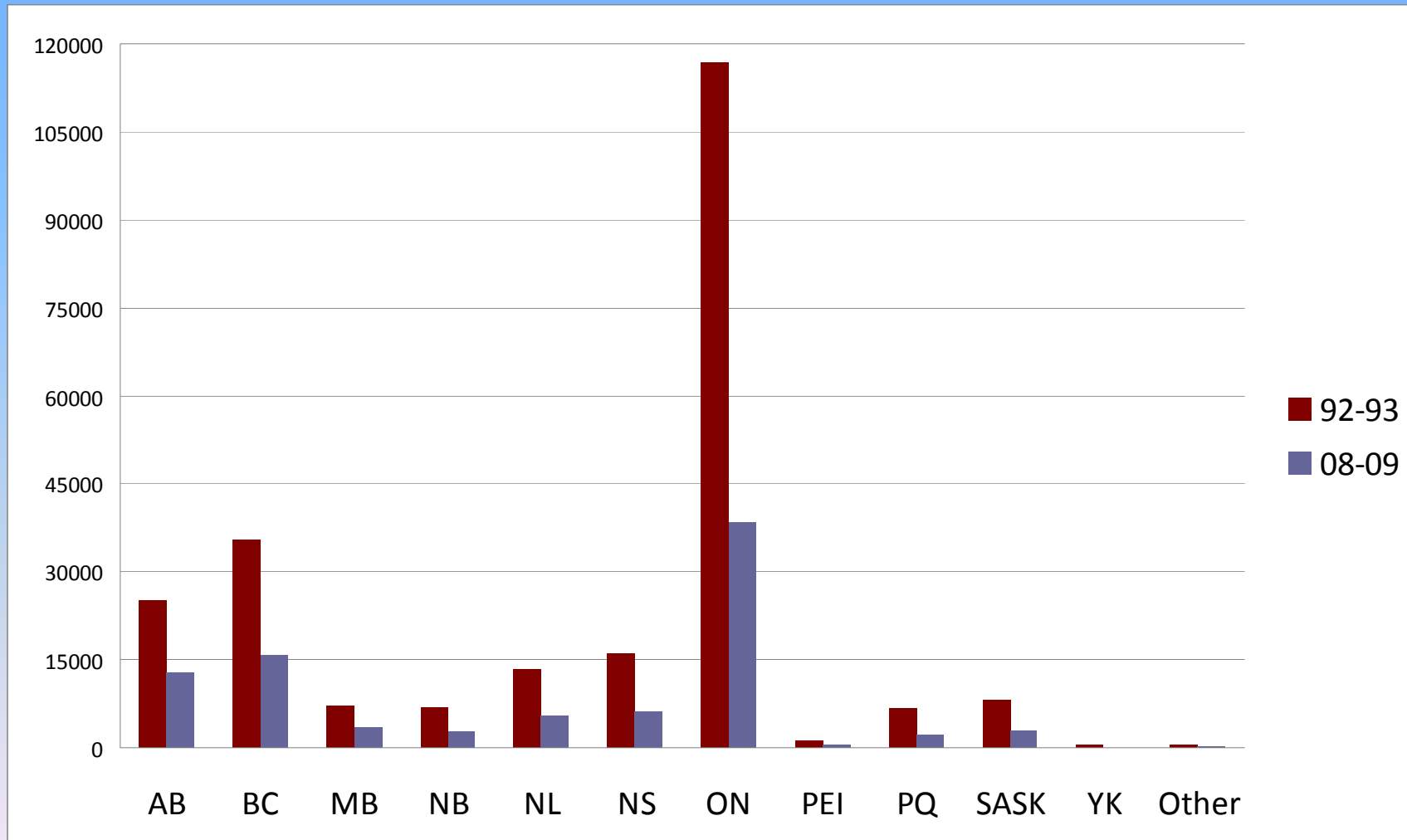
National Perspective

- Nationally we were 230,000+ strong
- 10 Provinces & 2 Territories
- Committees, Councils, Boards
- What do our numbers look like?

Membership Comparison: 1992-1993 to 2008-2009

Province	1992-1993	2008-2009	Net change
Alberta	25,122	12,769	-49.17%
British Columbia	35,462	15,766	-55.54%
Manitoba	7,212	3,435	-52.37%
New Brunswick	6,897	2,782	-59.66%
Newfoundland & Labrador	13,334	5,395	-59.54%
Nova Scotia	16,101	6,163	-61.72%
Other	427	126	
Ontario	116,754	38,365	-67.14%
Prince Edward Island	1,315	453	-65.55%
Quebec	6,553	2,194	-66.52%
Saskatchewan	8,164	2,846	-65.14%
Yukon Territory	502		
Total	238,436	90,294	-62.13%

Membership Comparison: 1992-1993 to 2008-2009



2 Year National Perspective

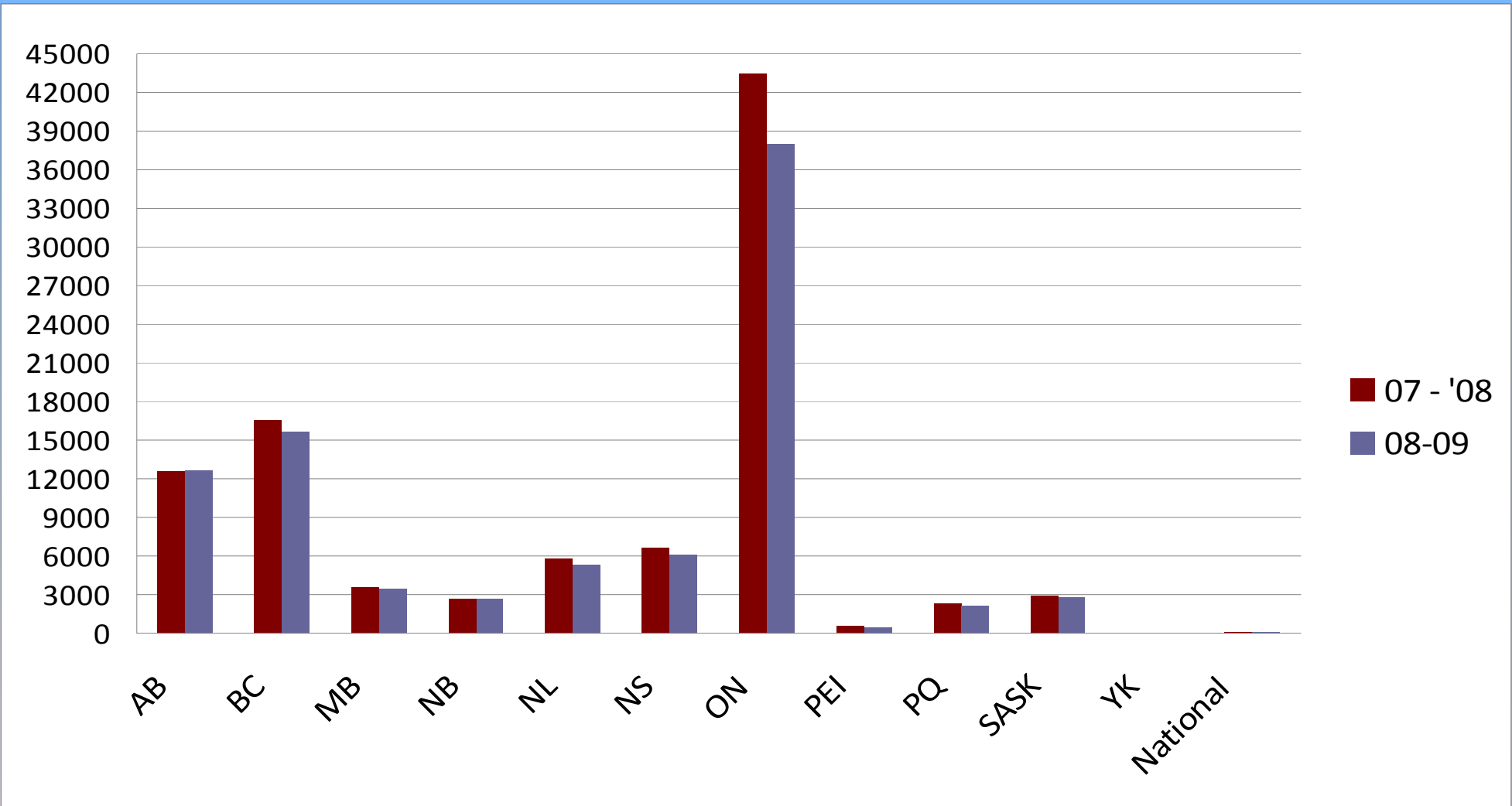
Has the trend continued?

What did the 2007/2008 and 2008/2009
Registration years tell us?

Membership Comparison 2007-2008 to 2008-2009

Province	2007-2008	2008-2009	Net Change
Alberta	12,608	12,630	0.17%
British Columbia	16,540	15,671	-5.31%
Manitoba	3,551	3,408	-4.03%
New Brunswick	2,638	2,708	2.65%
Newfoundland & Labrador	5,784	5,345	-7.59%
National	133	124	-7.00%
Nova Scotia	6,670	6,114	-8.34%
Ontario	43,466	37,565	-13.58%
Prince Edward Island	594	477	-24.75%
Quebec	2,310	2,161	-6.45%
Saskatchewan	2,918	2,830	-3.02%
Total	97,399	89,003	-8.62%

Membership Comparison 2007-08 to 2008-09



15+ Year Provincial Perspective

In 1994-1995 (15 years ago), we had
nearly 13,000 members

To support the Units, we had:

153 Districts, 36 Divisions, 11 Areas,
District, Area, and Provincial Advisers
Provincial Council - 42 Members

What do our numbers look like?

1999-00 (10 years ago)	8,662
2004-05 (5 years ago)	7,045
2008-09	5,345

Comparison Numbers:

in 5-year time periods
from 1994-1995 to 2008-2009

Year	Girls	Adults	Total
1994-95	10,022	2,646	12,668
1999-00	6,834	1,828	8,662
2004-05	5,658	1,387	7,045
2008-09	4,288	1,057	5,345

Newfoundland and Labrador 2008-2009

Areas – 11

Divisions – 2 (September 0)

Districts – 79

Units – 367 with 4,288 Girls

Adults – 1,057 including 26 Provincial
Council Members

What does this mean?



- With membership decreasing, Guiding in Canada cannot continue to operate in the same way.
- We must look closely at our structure and where we can make changes.

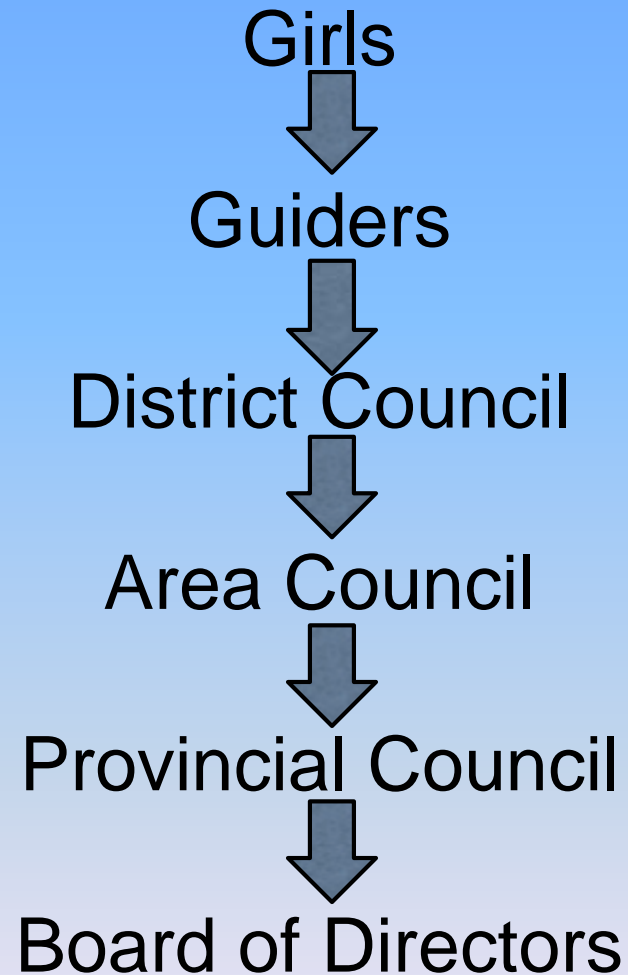
Role of the Areas

- Administrative Functions
- Maintain campsites/facilities
- Financial Management
- Financial Support – Districts/Guiders/Girls
- Organize Larger events
- Ensure 2-way communication (Province & Districts)

Role of the Districts

- Contact with Girls and Guiders in the Units
- Communication/Information Sharing
- Problem Solving/Idea Sharing
- Awards/Local Trainings/Financial Reviews
- Support/Mentoring/Recruitment
- District Wide Activities

Girl Focused



National Requirements for a District

- Minimum of 6 units and/or minimum 85 Members
- District Council for relationships, mentoring, support of Units & Guiders

National Requirements for an Area

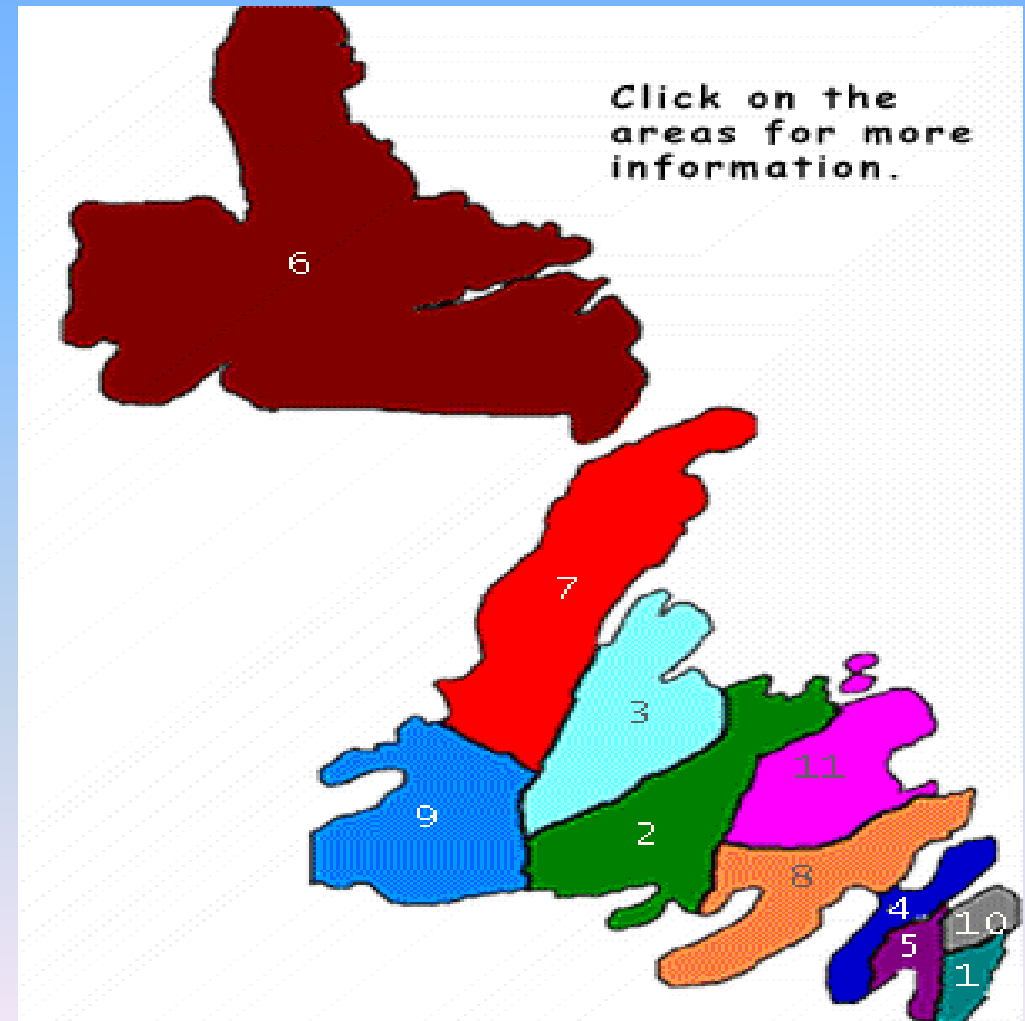
- Minimum of 6 Districts and/or minimum of 500 Members
- Area Council

Steps to meet National's Requirements

- District Mergers/Realignment
- Area Mergers/Realignment

Existing Areas in NL

1. Avalon
2. Central East
3. Central West
4. Coastal
5. CBS
6. Labrador
7. North West
8. Peninsulas
9. South West
10. St. John's
11. Terra Nova



Current Structure

- 11 areas in our province
- Varying membership numbers
- Varying distances from one part of an area to another
- Function: Manageable size for info exchange, trainings, rallies, events, etc.

Questions?

- If you have any questions or comments please email them to the emails address shown

Together we can do this!

Provincial Council (currently)

- 26 Members, consisting of:
 - Provincial Commissioner
 - 2 Deputy Provincial Commissioners
 - Secretary
 - Treasurer
 - 5 Department Heads/Provincial Advisers
 - Provincial Cookie Adviser
 - 3 Elected Members
 - 11 Area Commissioners
 - Executive Director (Ex-Officio)

Motions by Provincial Council

- “that current Areas complete the merger of Districts according to National’s district requirements by June 2010”
- “that Provincial Council move toward full implementation of area structure by June 2010”
- “that Newfoundland and Labrador be restructured to seven areas as recommended by Area Commissioners”

New Names

- Each Area can decide the name for the new structured area
- Districts can decide the name for their new structured district
- All names will be officially recognized at their parent council

